

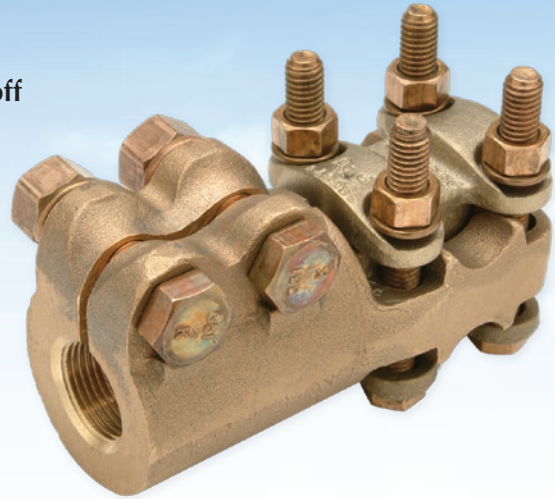
# SUBSTATION CONNECTORS

## Bronze Stud Connectors

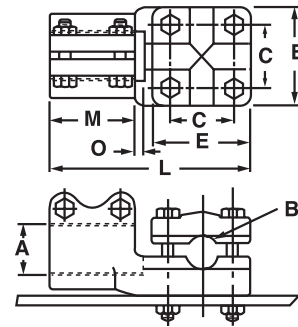
### Type CSR

For stud to cable, tube, or flat bar vertical or horizontal take off

- Manufactured from high strength copper alloy
- Furnished with silicon bronze bolts, nuts, and lockwashers for corrosion resistance
- Cap on tap end can be rotated to utilize two grooves which accommodate a wide range of cable and IPS conductor sizes
- The reversible cap can be rotated 90° to provide a straight or horizontal take off
- Offset connector design allows for mounting to flat bar
- Captive bolt design permits single wrench installation
- For tin plating, suffix catalog number with “-TN”



CATALOG NUMBER	A STUD THREAD SIZE	B COPPER CONDUCTOR RANGE		
		IPS RANGE	SMALL GROOVE RANGE	LARGE GROOVE RANGE
CSR-0513-025	1/2-13	-	6 Sol. - 1 Str.	1 Str. - 250 kcmil
CSR-0716-025	3/4-16	-	6 Sol. - 1 Str.	1 Str. - 250 kcmil
CSR-0716-050		3/8 - 1/2	6 Sol. - 4/0 Str.	4/0 Str. - 500 kcmil
CSR-0716-100		3/8 - 3/4	2 Sol. - 350 kcmil	350 - 1000 kcmil
CSR-1014-025	1-14	-	6 Sol. - 1 Str.	1 Str. - 250 kcmil
CSR-1014-050		3/8 - 1/2	6 Sol. - 4/0 Str.	4/0 Str. - 500 kcmil
CSR-1014-100		3/8 - 3/4	2 Sol. - 350 kcmil	350 - 1000 kcmil
CSR-1112-025	1 1/8-12	-	6 Sol. - 1 Str.	1 Str. - 250 kcmil
CSR-1112-050		3/8 - 1/2	6 Sol. - 4/0 Str.	4/0 Str. - 500 kcmil
CSR-1112-100		3/8 - 3/4	2 Sol. - 350 kcmil	350 - 1000 kcmil
CSR-1212-100	1 1/4-12	3/8 - 3/4	2 Sol. - 350 kcmil	350 - 1000 kcmil
CSR-1512-025	1 1/2-12	-	6 Sol. - 1 Str.	1 Str. - 250 kcmil
CSR-1512-050		3/8 - 1/2	6 Sol. - 4/0 Str.	4/0 Str. - 500 kcmil
CSR-1512-100		3/8 - 3/4	2 Sol. - 350 kcmil	350 - 1000 kcmil
CSR-1512-200		3/8 - 1 1/4	4/0 Str. - 900 kcmil	900 - 2000 kcmil
CSR-2012-100	2-12	3/8 - 3/4	2 Sol. - 350 kcmil	350 - 1000 kcmil
CSR-2012-200		3/8 - 1 1/4	2 Sol. - 350 kcmil	900 - 2000 kcmil
CSR-2512-200	2 1/2-12	3/8 - 1 1/4	4/0 Str. - 900 kcmil	900 - 2000 kcmil
CSR-3012-200	3-12	3/8 - 1 1/4	4/0 Str. - 900 kcmil	900 - 2000 kcmil



CATALOG NUMBER	APPROXIMATE DIMENSIONS (IN.)					BOLT SIZE	
	C	E	L	M	O	STUD	TAP
CSR-0513-025	1.13	1.88	3.88	1.75	.13	3/8	3/8
CSR-0716-025	1.13	1.88	3.88	1.75	.13	3/8	3/8
CSR-0716-050	1.38	2.13	4.13	1.75	.13	3/8	3/8
CSR-0716-100	1.88	2.88	5.38	2.25	.13	1/2	1/2
CSR-1014-025	1.13	1.88	3.88	1.75	.13	3/8	3/8
CSR-1014-050	1.38	2.13	4.13	1.75	.13	3/8	3/8
CSR-1014-100	1.88	2.88	5.38	2.25	.13	1/2	1/2
CSR-1112-025	1.13	1.88	4.44	2.25	.19	3/8	3/8
CSR-1112-050	1.38	2.13	4.69	2.25	.19	3/8	3/8
CSR-1112-100	1.88	2.88	5.44	2.25	.19	1/2	1/2
CSR-1212-100	1.88	2.88	5.44	2.25	.19	1/2	1/2
CSR-1512-025	1.13	1.88	4.44	2.25	.19	1/2	3/8
CSR-1512-050	1.38	2.13	4.69	2.25	.19	1/2	3/8
CSR-1512-100	1.88	2.88	5.44	2.25	.19	1/2	1/2
CSR-1512-200	2.38	2.38	5.94	2.25	.19	1/2	1/2
CSR-2012-100	1.88	2.88	5.94	2.75	.19	1/2	1/2
CSR-2012-200	2.38	3.38	6.44	2.75	.19	1/2	1/2
CSR-2512-200	2.38	3.38	6.44	2.75	.19	1/2	1/2
CSR-3012-200	2.38	3.38	6.44	2.75	.19	1/2	1/2